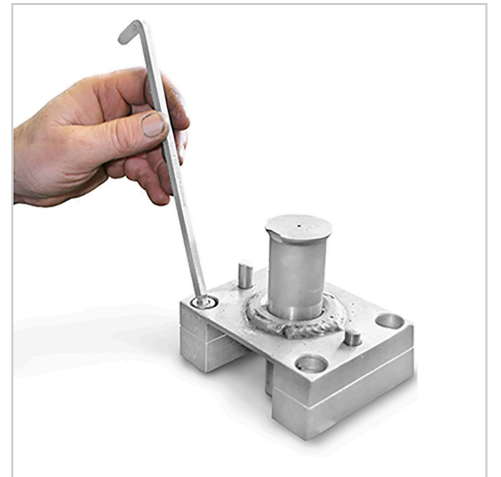
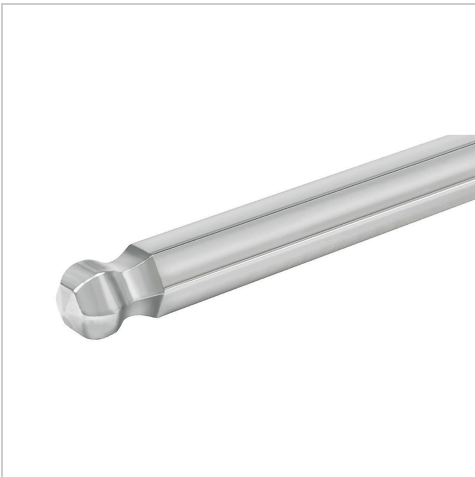


0442 Offset screwdriver, ball end, 1.5 mm, MATADOR Item No.: 04420015



0442 Offset screwdriver, ball end, 1.5 mm, MATADOR Item No.: 04420015

Beschreibung:

Angle screwdriver for hexagon socket screws. Long shape with ball head at the long end, hardened throughout. Ideal for hard-to-reach screws, as they can be used at an angle of up to 25°. Stamped, durable marking (not only lasered) and fully galvanically treated surface (nickel-plated and chrome-plated) for long-lasting corrosion protection. With chamfered edges for easier insertion into the screw even with worn screw heads. Special chromium vanadium alloy for transmitting high torque values. MATADOR is one of the pioneers of the tool industry. Since 1900 we have been producing quality hand tools "around the screw". We stand for sophisticated premium tools. Reliable, design-oriented, no frills. For people who know what they want. They are in the arena and not in the auditorium. Being able to distinguish tools from toys. Who believe in themselves. Welcome to the Arena! Be a MATADOR.

Technische Daten

Manufacturer-Number:	04420000M
Width:	80 mm
Height:	1 mm
Length:	100 mm
Weight:	0.003 kg