



Be a MATADOR.

Company profile.

High quality hand tools and more since 1900.



Since 1900.

Premium hand tools for professional users. All around the screw.





MATADOR is one of the **pioneers in the tool industry**. Since 1900 we have been producing **quality hand tools** „around the screw“. Still located in Remscheid - the German centre of the premium tool manufacturers - MATADOR belongs today to the leading German manufacturers of tightening tools.

For over 118 years MATADOR has been a fully privately owned and owner-managed **family enterprise** which is now in its fourth generation. Reliability, a longterm perspective and sustainable business operations form part of our core beliefs and values.

In 1900 Mr Heinrich Kissling, the founder of MATADOR, started on two **water-powered forging hammers** with the production of hand tools. In the following years he filed **many patents** for all kind of hand tools. Considering „MATADOR“ - the Spanish name for the principal bull-fighter - to be an **ideal synonym for strength and energy** he registered the brand name „MATADOR“ at the Commercial Register in 1919: „Wrenches and sockets in the very best quality and workmanship“.

100 years later and with a comprehensive product range of **more than 4,500 catalogue articles** MATADOR is still focussing on tightening tools

around the screw. The hexagon nut held by a stylized wrench as well as the word mark „MATADOR Schraubwerkzeuge“ symbolize the company's origin and its core competence.

As an accredited first tier supplier of **all major OEMs** and with professional customers in more than **70 countries** MATADOR tools are much appreciated by people who are the MATADORS in their field.

Without exaggeration we can say that nearly every professional workshop worldwide is equipped with at least one MATADOR tool.



For everyday heroes.

Be a MATADOR.

MATADOR is **not mainstream**. We stand for upmarket premium tools. Reliable, design-focused, efficient. Intelligent tightening tools made for decision makers, fighters and **everyday heroes**. For real MATADORS.

For people who know and express what they want. People **who are inside the arena**, not in the stands. Who know **the difference between tools and toys**. Who do not seek excuses and are true to themselves. Past and present. For down-to-earth, straightforward and assertive individuals with life experience and stories to tell. Who overcome adversity, manage a healthy work-life balance and **believe in themselves**. Who appreciate the exceptional and do not hesitate to show that.

Welcome to the arena.



MATADOR at a glance.

What you should know about MATADOR.

**Since
1900.**

**Family-
owned.**

**All around
the screw.**

**First lever
ratchet in
1919.**

**>4,500
premium
tools.**

**Focussed on
industry and
automotive.**

**>1,000 B2B
customers.**

**OEM
accredited.**

**>70
countries.**

MATADOR patented its first lever ratchet in 1919.

Produced just to get the job done.



1919.
The first lever ratchet.

Today it takes more to make a really good ratchet.

More teeth. More power. More grip. More applications. More design.



2018.
The Boss. The new **Z90**.

25%

reduced angle (only 4°) compared to standard fine-toothed ratchets thanks to an **innovative 90-teeth technique**. Still ready for working even when it gets really tight.

50%

more torque than requested in the DIN standards (e.g. 12.5 mm (1/2") > 750 N·m). Still loosens screws when others have long given up.

max.

ergonomics thanks to a **multi-component handle**, better than standard 1- or 2-component handles. Optimally adapted, spherical shape for powerful grip.

The re-design of a socket set. The new smartyBOX.
Intelligent tools ultra-compact.



Stackable and can be clicked onto each other for easy transport.

Corrosion-free, robust, stable, shockproof, dustproof, versatile, food-safe.

Compact in size:
W 206 x D 156 x H 63 mm.



Z90 ratchets:



All you need is a smartyBox.
Fits all major applications.



Ultra-handy **universal box** including the new MATADOR 1/4" reversible ratchet **Z90...**

The absolute full equipment for screw tasks from **4 - 14 mm**, including **combination pliers with integrated ring spanner** for countering. With **innovative spinner handle** that can be used as a **multiscrewdriver** and extended to a total length of 320 mm.



Comprehensive socket set with the new MATADOR 3/8" reversible ratchet **Z90...**

Covers 90 % of all screw tasks with socket sizes from **6 - 22 mm**. **8° swivelling extension bars** included for screw connections that are difficult to reach. With **adjustable wrench**, perfect for countering or screw tasks that require an open ended spanner (e.g. when bolts are in the way).



Innovative completion box with combination ratchet spanners and ratchet adapters.

Combination ratchet spanners **with lever** for quick change of direction. With slightly angled ring side. Includes the most important **spanner sizes from 7-19 mm** and **4 additional ratchet adapters** for using the ratchet spanners as a full-value ratchet for sockets.

MATADOR Cubes.

No more looking for tools. No more loss. Scratch-resistant. Shakeproof.



MATADOR Cubes:

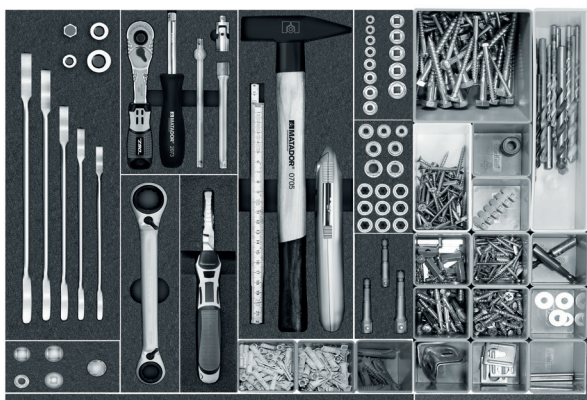


Small. Angular. Flexible. For everywhere.

Select what you need and where you need it.



Do what you want and design your own box.



Do you know the following problems?

- You own several cases for power tools, hand tools, small parts, etc. and whenever you prepare for work you pack half of your workshop and take it to the place of action?
- Chaos dominates your tool cases. You do not find anything?
- You just need only a couple of tools?
- Your tools are stored in another place and are not available at the moment?
- You do not like pre-configured blow-moulded tool cases because your favorite tools do not fit in or they contain tools you really don't need?

If these problems meet your profile, then you should change something. We can provide you with a solution: MATADOR Cubes.

MATADOR Cubes are **compact tools modules** in 5 sizes. They can be combined extremely flexible, they fit into any place and help to create a perfect order.

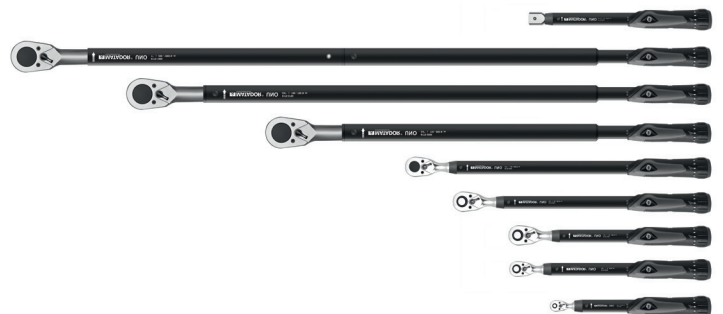
5 sizes. 1 basic raster.
From 104 x 52 mm.

- ☒ For workbenches
- ☒ For tool trolleys
- ☒ For kitchen drawers
- ☒ For desk drawers
- ☒ For central trays in cars
- ☒ For Sortimo L-BOXX®
- ☒ For TANOS systainer®
- ☒ For raaco cases
- ☒ For W.AG cases
- ☒ etc.

For workshop, home and hobby. For almost any drawer or box you want to put your tools in. High quality tools with a system.

Torque tools from MATADOR.

Extremely precise and easy to use.





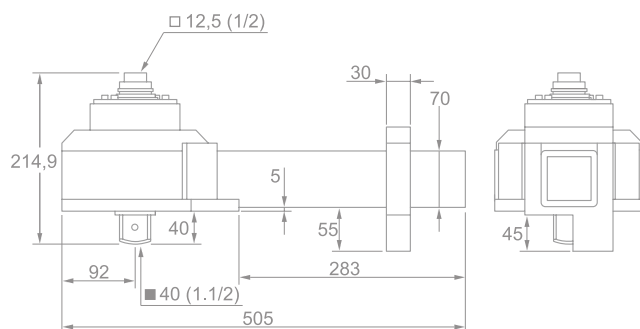
The new professional torque wrench **UNO** comes with **an absolutely innovative operating concept**:

Easy setting with extra fine graduation (from 0.5 N-m to 1.0 N-m on larger models), **only one window with clear numeric value in N-m**. No division scale which is difficult to read.

With small ratchet head to reach tiny spaces, with lever and 48 teeth, safety lock and quick-release function. Permanent protection of the body thanks to full powder coating.

The handy and ergonomically optimal design of the handle with its integrated finger grooves make the correct use a breeze. Clearly audible and perceptible signal when the desired torque value is reached.

The MATADOR UNO is extremely precise: **maximum deviation only ±3%** from the set scale value. For controlled clockwise operation. With German calibration certificate according to DIN EN ISO 6789.



MATADOR produces several kind of torque tools for the automotive industry according to customer's requests - just talk with us what we can do for you.



Smart repair with smart tools.
Innovative tools beyond the ordinary.



Screw IT!

Loosens nearly all damaged, unhardened and even rusty screws without thread repair tools.



Screw IT:



High-performance impact wrenches.
Still working when others have long given up.



Premium pliers with innovative 3KsoftGRIP handles and many special features.



MATADOR's wide range of pneumatic tools: Impact sockets for industrial users from 4 to 255 mm.

Pneumatic Tools:



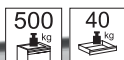
4-255 mm.

Check out all our >4,500 products.
No toys. Just tools.

Tool trolley **RATIO**. The industry's choice.

One for everything. 7 or 8 drawers. Spacious, solid and loadable.

 **RATIO**



8 drawers.



Tool chest.



Workstation L.



Workstation XL.

The MATADOR workshop trolleys are known for their **robust construction** and **durable quality**. For many years **MATADOR** has been supplied numerous OEMs and industrial market leaders with the success model „**RATIO**“. Available with **7 or 8 drawers** and expandable to a full workstation.

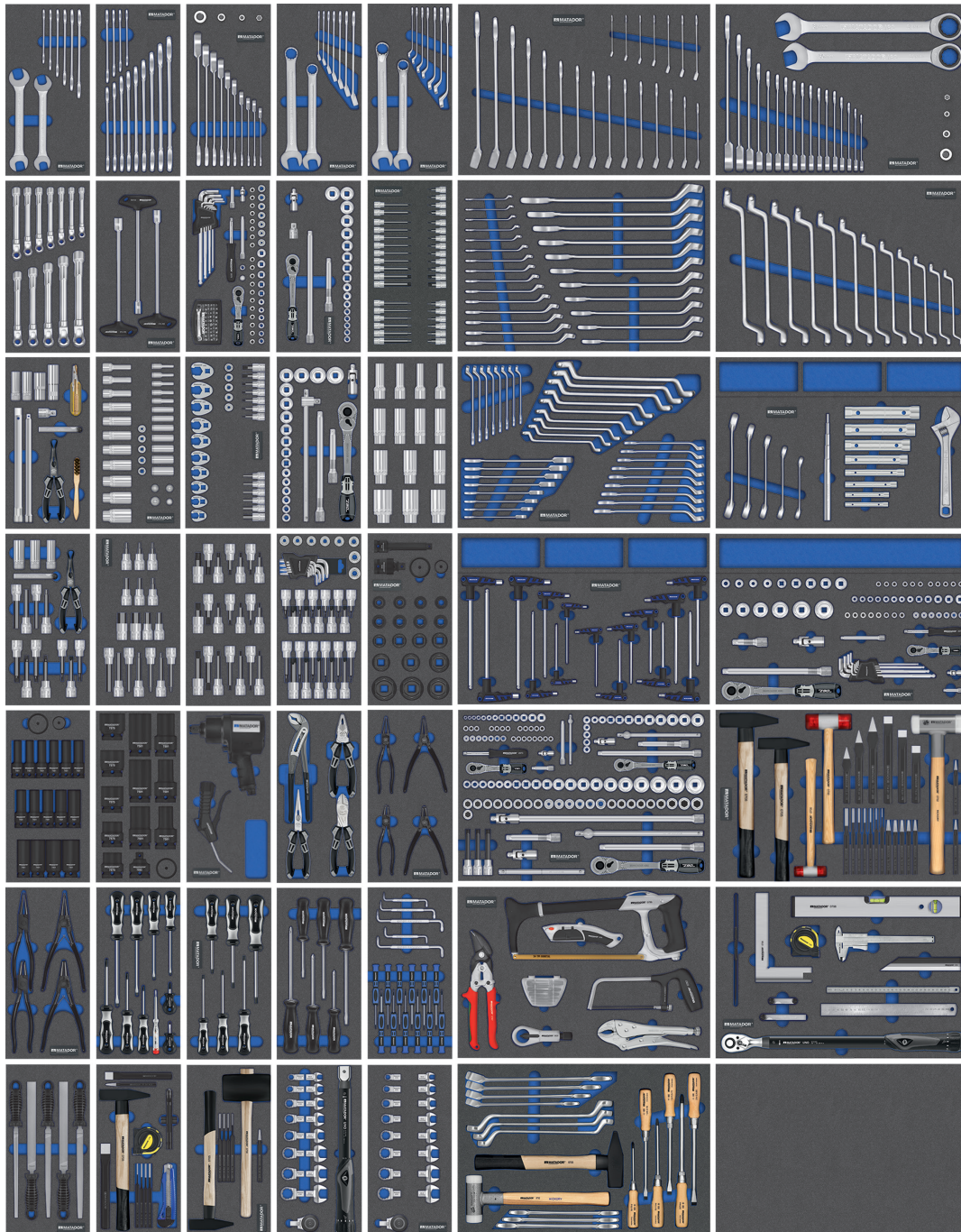
Features: Comfortable working height, durable ABS worktop with several compartments for small parts and holders for tins. **Ergonomic handle** for convenient pushing, pulling and turning even when fully loaded. Rounded edges and **integrated corner damage**

protection. Both side **panels with square perforation** for assembly of accessories. **Ball-bearing castors** with **high loading capacity** (500 kg total). Drawers with **3-level locking system**: central locking, single-locked drawers, mechanical interlock („one at-a-time“ locking system).

Fully extendable drawers (100%) with **ball-bearing high performance slides**. Including pictogram labels for individual drawer labelling and quick orientation. Body and drawers with **highly resistant powder coating** (black, RAL 9005), drawer handles made of aluminium.

More than 100 modules to make you happy. Get organized with the MATADOR Tool System.

MTS MATADOR
TOOL SYSTEM.



Workshop Equipment:



MATADOR was one of the first manufacturers who developed **two-coloured soft foam inlays** for a better tool organization in tool trolleys or drawers.

Today the **MATADOR Tool System MTS** includes **more than 100 different**

modules and offers preconfigured and well-thought-out solutions for any application. The end user can choose from 2 different sizes that fit into one raster.

"Q" modules have a compact size of 340 x 190 mm (1/3) or 340 x 440

mm (3/3) and fit into most smaller standard tool trolleys. **"R" modules** are the more professional line. They fit exactly into the MATADOR tool trolleys **RATIO**, **VARIO** and of course into the drawers of the **Men's Kitchen®**. The standard module size of 390 x 190 mm allows accomoda-

tion for many tools and therefore a comprehensive range is offered. The 3/3 modules sized 570 x 390 mm fill a complete drawer with tools. Empty modules help to easily combine different modules – for nearly unlimited applications.

Premium storage solutions.

3 star cuisine for real craftsmen. It`s served.



PICCOLO
1,276 mm



COMPACT
1,956 mm



MEDIUM
2,817 mm



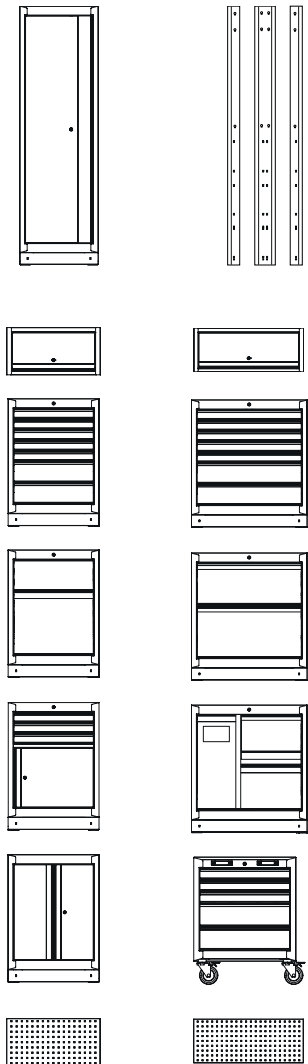
MOBILO
2,817 mm



GRANDE
4,089 mm



Pre-configured or individually selected. The smart modular system.



Men's Kitchen®
by MATADOR. 

It is not only the single tool that counts: In a complex and increasingly digitally driven world it is becoming even more important to have a place where you can be creative and follow your desire to work with your hands.

For tool enthusiasts this place is the **Men's Kitchen®** by MATADOR. **Men's Kitchen®** is not only a storage

solution, it is a place where you will be inspired to create new things and where you will be highly inspired to „get the job done“.

Our **pre-configured kitchen blocks** in different sizes fit into all rooms, from broom closet to assembly hall. Thanks to its modular system the **Men's Kitchen®** is freely expanda-

ble and grows with your individual requirements.

The standardized drawer dimensions allow to include the professional MATADOR module system MTS into the **Men's Kitchen®** configuration so that all single tools will be in perfect order. With closets for power tools, storage boxes for all your individual

small parts and our extensive program of accessories you can easily design your own world of tools, your own **Men's Kitchen®**.

Fits into every room. No drilling, no wall assembly. Fully pre-assembled. Comfortable working height.

Men's Kitchen:



Customer insights.
Just being a MATADOR.



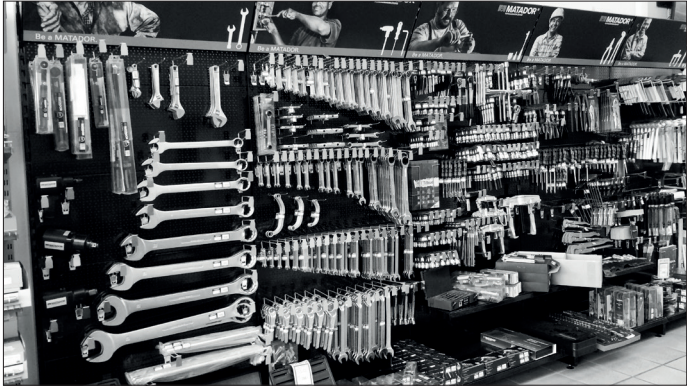
Stock organization in Riyadh, Saudi Arabia



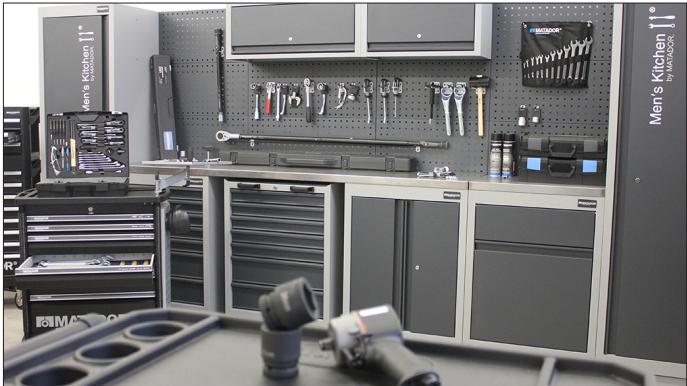
Mercedes-Benz, Hong Kong



Hyundai, South Korea



Retail Shop, Denmark



Men's Kitchen Workshop, Germany



MAN Rheinmetall Military Vehicles, Singapore



Porsche, Vietnam



Samco, Vietnam

Leading companies rely on the quality of MATADOR.

Demanding customers - including numerous market leaders - have been working with MATADOR tools for many years.

Automotive



Aircraft



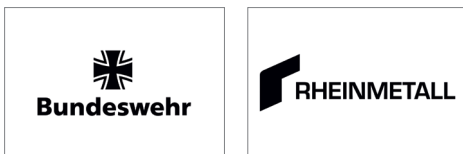
Commercial vehicles



Construction



Defence



DIY / Online



Manufacturing



Medical



Telecom



Oil & Gas



...and many more.

WE PROVIDE EVERYTHING „AROUND THE SCREW“. AND WE ARE PASSIONATE ABOUT IT. WE FOCUS ON TOOLS YOU REALLY NEED. WE ONLY INNOVATE WHEN WE CREATE VALUE. WE ARE COMMITTED TO QUALITY. WE OFFER AN EXTENDED WARRANTY. WE REDUCED COMPLAINTS TO <0.03%. WE DON'T JUST TALK ABOUT IT, WE LIVE IT. STRAIGHT TO THE POINT - WE SAVE YOUR TIME. OUR TOOLS ARE WORTH EVERY PENNY. WE PROMISE.

WE ARE MATADOR.



MATADOR GmbH & Co. KG

Morsbachtalstr. 17
42855 Remscheid
Deutschland - Germany

T: +49.2191.9743.0
E: sales@matador.de

Stay tuned.

